



TDC Series

DIRECT DRIVE VANE AXIAL FAN



Feature

For commercial and industrial application where large volume of air is required at moderate to high pressure. Volume coefficient ranged from 0.2 to 0.5 and pressure coefficient ranged from 0.2 to 0.7. Specially designed integral straightening vanes reduce turbulence and provide high efficiency and low sound level.

Construction

Double flanged casing is produced in mild steel or galvanized steel. The impeller blades are made of Aluminum Alloy.

Finish

Zinc rich primer and polyester powder coating or galvanized finishing are available for all mild steel parts.

Operating Temperature

Normal Ventilation : -20°C to +55°C
 High Temperature Application : available up to 250°C/2Hrs.

Motors

Totally Enclosed Class 'F' or 'H', with a min. IP55 protection are fitted as standard. Motors 3.0kW and above are star/delta starting. Motor of other specification are available upon request.

Airflow Direction

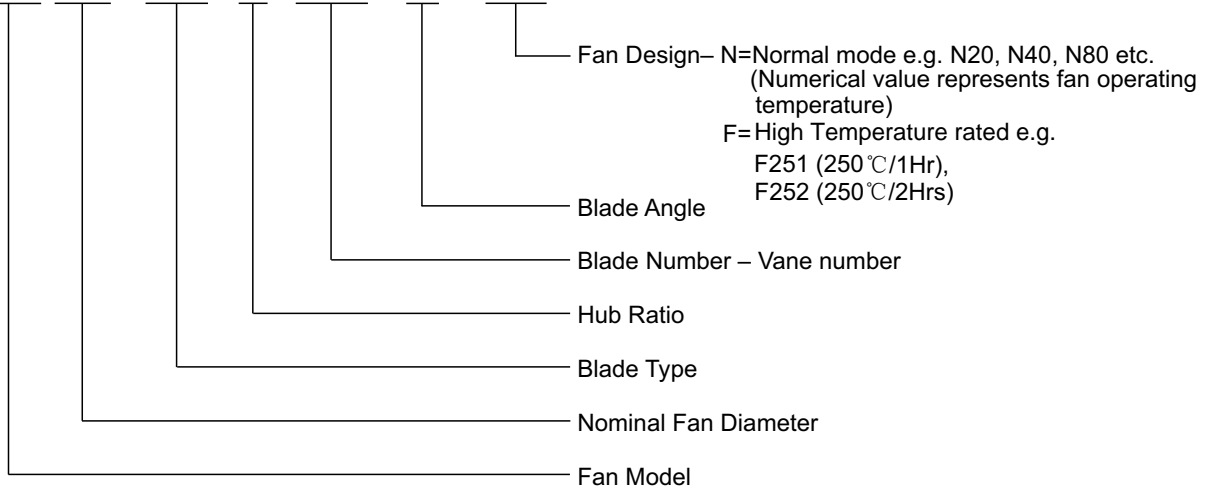
Air flow from impeller to motor is fitted as standard. Air flow from motor to impeller can be supplied upon request.



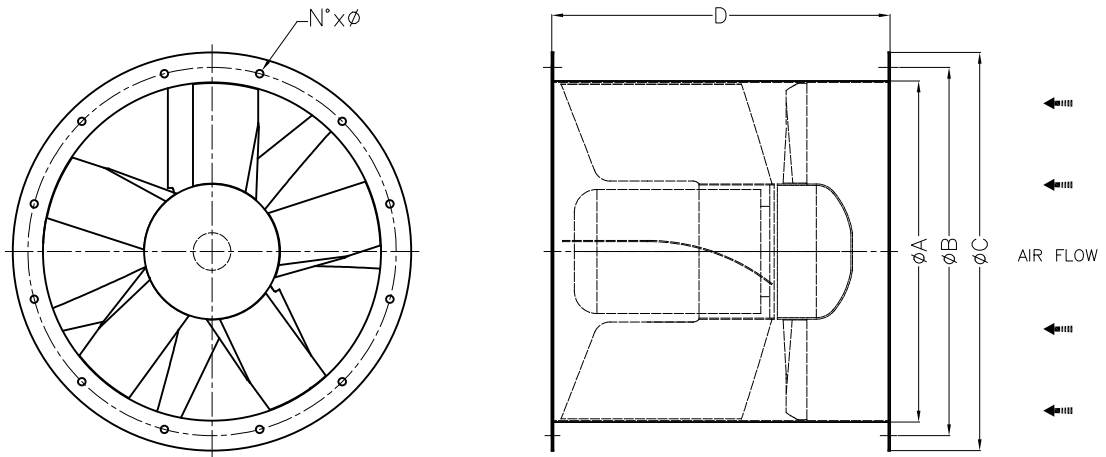
Kruger Ventilation Industries Asia Co.,Ltd. certifies that the **TDC Series** shown herein is licensed to bear the AMCA Seal. The ratings shown are based on tests and procedures performed in accordance with AMCA Publication 211 and AMCA Publication 311 and comply with the requirements of the AMCA Certified Ratings Program.

Nomenclature

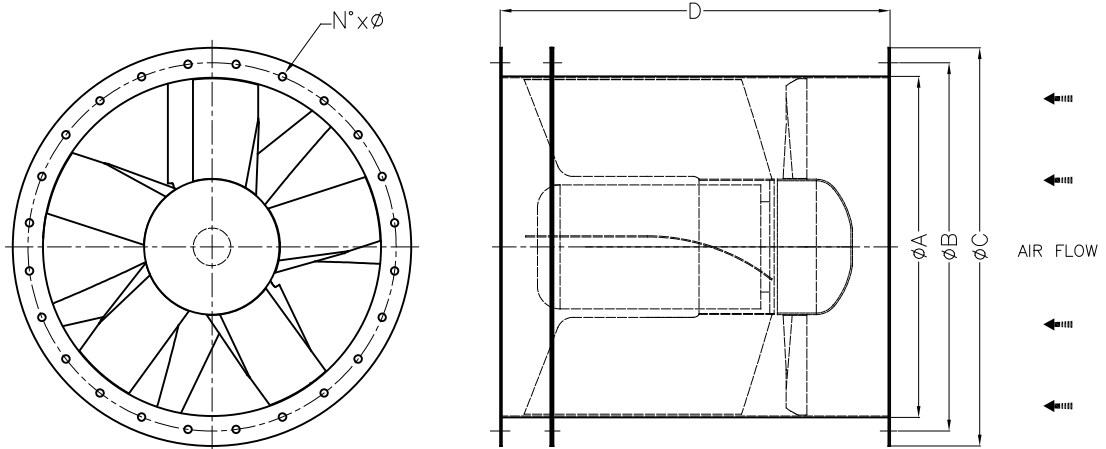
TDC 450 / C09 / G / 5-5V / 15° / N20



Dimension



For Fan Model 450 to 1120



For Fan Model 1250 to 2000

All dimension in mm.

Model	A	B	C	D	N°	Ø	Weight* (kg)	Max. Motor Frame Size**
450	450	490	530	450	12	10	22	D100
500	500	540	580	500	12	10	28	D112
560	560	605	660	560	12	10	36	D132
630	630	675	730	630	12	10	45	D132
710	710	755	810	710	18	12	79	D160
800	800	845	900	800	18	12	95	D180
900	900	945	1000	900	18	12	125	D200
1000	1000	1050	1100	1000	24	12	160	D225
1120	1120	1185	1250	1120	24	12	206	D250
1250	1250	1315	1380	1250	24	12	350	D280
1400	1400	1465	1530	1400	32	14	420	D315
1600	1600	1663	1730	1556	32	14	642	D355
1800	1800	1856	1930	1858	32	14	843	D355
2000	2000	2073	2130	1858	32	14	1065	D355

* Weight without motor.

** Please consult KRUGER for motor frame size other than specified.